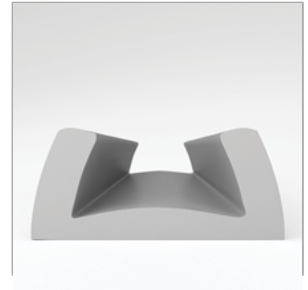


# CATALOG PARTS

## MARINE PRODUCTS

### SEALS FOR LONG-TERM PROTECTION AND DURABILITY

Cooper Standard Industrial and Specialty Group (ISG) offers hundreds of marine products that provide safety and security in, out of and around the water. Rely on our products to stand up to harsh weather conditions, corrosion, excessive wear and rough waters (both salt and fresh) while providing long-term protection. Cooper Standard ISG's marine products are also used to protect items such as canoes, racing sculls and jet skis while in transit.



#### APPLICATIONS

- Docks
- Decks
- Boats
- Kayaks
- Jet Skis
- Canoes
- Trailers

#### ADDITIONAL BENEFITS

- Durable and Resilient in the Harshest Weather
- Cushions and Protects Vessels, Docks and Decks
- Rust Resistant
- Seals and Protects any Edge or Flange
- Allows Mooring Lines to “Stretch”

#### MARKETS SERVED

- Marine
- Manufacturing
- Transportation

#### AVAILABLE PRODUCTS

- Dock Bumpers
- Heavy Duty Flanged Horizontal Dock Bumpers
- Single Cushion Dock Bumpers
- Trailer Cradle Pads
- Heavy Duty Double Cushion Dock Bumpers
- Small Horizontal Dock Bumpers
- Mooring Snubbers
- Stainless Steel Sliding Window Channels
- Push-on Trim Seals
- Edge Trims
- SealStrip® Rubber Tape



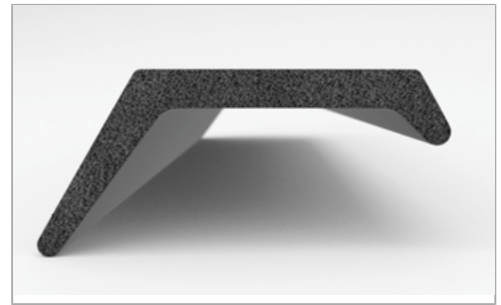
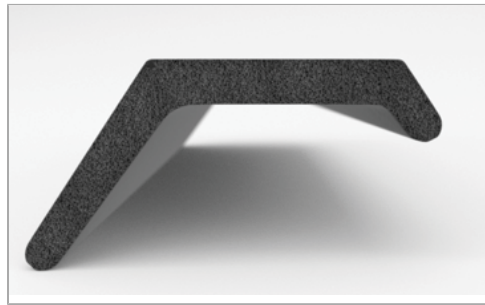
Scan the QR Code to Contact Us

# CATALOG PARTS

## GARAGE DOOR WEATHERSTRIPS

### EFFECTIVE, TROUBLE-FREE WEATHERSTRIPPING AND THRESHOLDS

The original weatherstrip for the bottom of wood and steel overhead garage doors, Cooper Standard Industrial and Specialty Group (ISG)'s StanStrip® is used on tens of thousands of overhead garage doors throughout North America. Our sponge unicell and dense EPDM rubber materials provide a shock-absorbing seal that keeps out weather, pests and dirt while cushioning the impact of a closing garage door. To ensure a complete garage door seal, our Garage Door Thresholds also keep the elements out and keep garage interiors cleaner.



#### APPLICATIONS

- Garage Doors
- Garage Floors

#### MARKETS SERVED

- Marine
- Construction
- Garage Door Installation

#### AVAILABLE PRODUCTS

- StanStrip® (EPDM Dense Rubber Compound)
- Unicell (Premium Quality Astragal Sponge Rubber)
- Garage Door Threshold (EPDM Dense Rubber Compound\*)

*\*Needs to be glued to the garage floor using a heavy-duty adhesive.*

#### ADDITIONAL BENEFITS

- Quick and Easy to Install
- Keeps out Weather, Dirt and Pests
- Stays Soft even During Temperature Extremes
- Tough Exterior and Long-lasting Material Reduce Customer Complaints
- Inventory for Immediate Shipment
- Stays Where it is Installed and Will Not Crack, Move or Shatter



Scan the QR Code to Contact Us



- **Part No. : 75000436**
- **Product Category : General Purpose Rubber Seals**
- **Product Family : Seals**
- Ship from Location : Spring Lake, MI
- Standard Pack Quantity : 2 x 100' rolls
- Standard Carton Size : 23.0 x 23.0 x 7.0
- Made to Order/Stock : Made to Order
- Material Type : Unicell/Sponge
- Color : Black
- Length : 100'
- Width : 1.7500"
- General Purpose Rubber Seals: Garage Door Lip Length : 1.2500"
- General Purpose Rubber Seals: Product Description : Garage Door Seal