

# CATALOG PARTS

## SELF-SEALING WEATHERSTRIPS

### DURABLE SELF-SEALING WEATHERSTRIPS FOR FIXED WINDOWS

Cooper Standard Industrial and Specialty Group (ISG)'s self-sealing weatherstrips are easy to install and lock the glass securely in place while providing an effective seal from the elements. Our self-sealing weatherstrips are flexible and versatile and can be used in a variety of markets and industries for fixed windows applications such as garage door windows, RV windows, automotive windows and heavy farming equipment.



#### APPLICATIONS

- Stationary Windows
- Moonroofs
- Construction Truck Cabs
- Windshields

#### MARKETS SERVED

- Automotive
- Heavy Machinery
- Marine
- Construction
- Agriculture
- Transportation
- Recreational Vehicles

#### MATERIALS & STYLES

- EPDM\* Anti-oxidizing Black Rubber
- One-piece Self-sealing Weatherstrip
- Two-piece Self-sealing Weatherstrip
- Sliding Window Assemblies

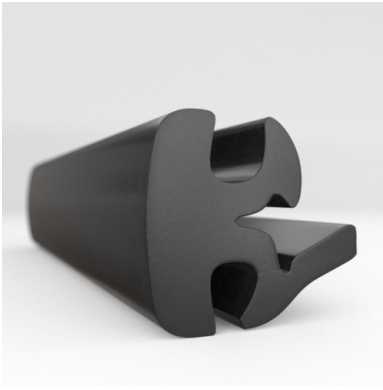
*\*Compounded to meet requirements for ASTM D 2000 SAEJ 200 M4AA77 A13 B13 C12 F17 P2*

#### ADDITIONAL BENEFITS

- Easy to Install
- Cost-effective
- Durable
- Will Not Stain, Shrink or Tear
- UV, Ozone and Weather Resistant
- Withstands Extreme Temperatures



Scan the QR Code to Contact Us



- **Part No. : 75000600**
- **Product Category : Self Sealing Weatherstrip**
- **Product Family : Seals**
- Ship from Location : Spring Lake, MI
- Standard Pack Quantity : 1 x 50' roll
- Standard Carton Size : 19.25 x 19.25 x 4.5
- Made to Order/Stock : Made to Order
- Self Sealing Weatherstrip: Locking Type : One-Piece Locking
- Profile/Section : AS1536
- Material Type : EPDM Rubber
- Color : Black
- Length : 50'
- Glass Range : 0.1875" to 0.2500"
- Self Sealing Weatherstrip: Body Panel Range : 0.1875" to 0.2500"
- Application : Window