

CATALOG PARTS

WINDOW CHANNELS & WEATHERSTRIPS

EASY WAY TO INSTALL SLIDING OR ROLLING WINDOWS

Cooper Standard Industrial and Specialty Group (ISG)'s Channels and Weatherstrips hold and protect glass securely while shielding occupants and contents from dust, moisture and noise. Our Channel and Weatherstrip products are manufactured to fit a variety of OEM and aftermarket applications, including classic auto restoration; sliding glass windows in office foyers; separation windows in taxis and police cars; recreational vehicles; and ticket booths.



APPLICATIONS

- Sliding Windows
- Inner Belts
- Outer Belts
- Glass Runs

MARKETS SERVED

- Automotive
- Heavy Machinery
- Marine
- Construction
- Manufacturing
- Transportation
- Recreational Vehicles

MATERIALS & STYLES

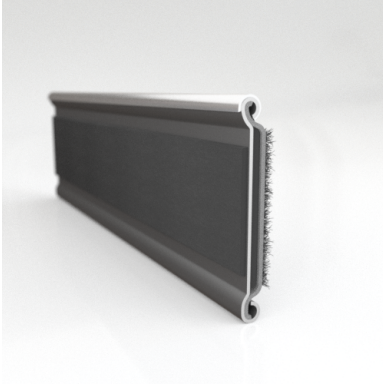
- Unbeaded with Steel Core
- Unbeaded All-Rubber Channels with Flocked or Coated Linings
- Beaded Channels
- Weatherstrips with Stainless Steel Beads
- Weatherstrips without Stainless Steel Beads

ADDITIONAL BENEFITS

- Eliminates Rattles
- Tight, Long-Lasting Fit to Cushion Glass
- Protects Against Corrosion, Moisture, Dust and Drafts
- Resists Fading



Scan the QR Code to Contact Us



- **Part No. : 75001344**
- **Product Category : Window Channel/Weatherstrip**
- **Product Family : Seals**
- Ship from Location : Spring Lake, MI
- Standard Pack Quantity : 50 pcs
- Standard Carton Size : 97.5 x 5.0 x 5.0
- Made to Order/Stock : Made to Order
- Profile/Section : YM169XP
- Material Type : Rubber Covered
- Color : Black
- Length : 8'
- Width : 0.250"
- Window Channel/Weatherstrip: Height : 0.656"
- Window Channel/Weatherstrip: Beaded or Unbeaded : Beaded - Stainless
- Window Channel/Weatherstrip: Flexible or Rigid : Rigid
- Window Channel/Weatherstrip: Window Facing Material : Pile