

CATALOG PARTS

PUSH-ON TRIM SEALS

WEATHERSTRIPS AND TRIMS FOR PERFORMANCE & AESTHETICS

Cooper Standard Industrial and Specialty Group (ISG)'s Push-on Trim Seals are ideal for any application that needs a solid, reliable seal—from toolboxes to closet doors, boat hatches to storage containers. Our Trim Seals are easy to install, simply push the seal down on any raw edge or flange to lock it in place—no glue required. And when it comes to gripping power, our flexible wire and segmented steel cores are the strongest and most resilient in the industry.



APPLICATIONS

- Boat Hatches
- RV Compartments
- Doors
- Tonneau Covers
- Tool Boxes
- Trunks
- Kayaks
- Storage
- Caskets

ADDITIONAL BENEFITS

- Easy to Apply
- Consistent, High-quality Materials
- Resilient Gripping Power
- Flexible Cores Bend, but Retain Shape
- Weather and Water Resistant
- Solid, Rattle-free Professional Finish

MARKETS SERVED

- Automotive
- Construction
- Manufacturing
- Commercial HVAC
- Transportation
- Marine
- Recreational Vehicles
- Power Sports

MATERIALS & STYLES

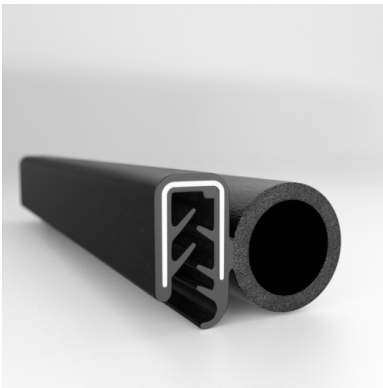
- Dual Durometer EPDM Sponge & Rubber
- Extrusions with Flexible Wire Core
- Dual Durometer EPDM Rubber Extrusions with Flexible Segmented Core
- Vinyl and Sponge Rubber with Flexible Segmented Steel Core



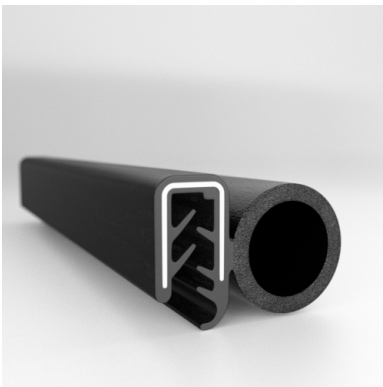
Scan the QR Code to Contact Us



- **Part No. : 75001495**
- **Product Category : Push-on Trim**
- **Product Family : Seals**
- Ship from Location : Spring Lake, MI
- Standard Pack Quantity : 1 x 500'
- Standard Carton Size : 43.125 x 42.625 x 8
- Made to Order/Stock : Made to Order
- Profile/Section : RS439
- Bulb Material Type : EPDM Sponge
- Edge Trim Material : Rubber
- Color : Black
- Length : 500'
- Leg Height : 0.650"
- Bulb Size : 0.750"
- Bulb Position : Side
- Flange Grip Range : 0.110" to 0.130"
- Same Profile As : 75001495, 75001745, 75001616



- **Part No. : 75001616**
- **Product Category : Push-on Trim**
- **Product Family : Seals**
- Ship from Location : Spring Lake, MI
- Standard Pack Quantity : 10 x 25' rolls
- Standard Carton Size : 19 x 19 x 12
- Made to Order/Stock : Made to Order
- Profile/Section : RS439
- Bulb Material Type : EPDM Sponge
- Edge Trim Material : Rubber
- Color : Black
- Length : 25'
- Leg Height : 0.650"
- Bulb Size : 0.750"
- Bulb Position : Side
- Flange Grip Range : 0.110" to 0.130"
- Same Profile As : 75001495, 75001745, 75001616



- **Part No. : 75001745**
- **Product Category : Push-on Trim**
- **Product Family : Seals**
- Ship from Location : Spring Lake, MI
- Standard Pack Quantity : 1 x 250' roll
- Standard Carton Size : 29.5 x 29.5 x 8
- Made to Order/Stock : Made to Order
- Profile/Section : RS439
- Bulb Material Type : EPDM Sponge
- Edge Trim Material : Rubber
- Color : Black
- Length : 250'
- Leg Height : 0.650"
- Bulb Size : 0.750"
- Bulb Position : Side
- Flange Grip Range : 0.110" to 0.130"
- Same Profile As : 75001495, 75001745, 75001616