



# FORTREX®

“FORTREX® IS A NEXT GENERATION LIGHTWEIGHT ELASTOMER THAT DELIVERS SUPERIOR SEALING, WEATHERABILITY, NVH AND GLOSS PERFORMANCE.”

## CHANGING YOUR VIEW OF STATIC WEATHERSEAL SYSTEMS

An innovative material technology that is changing the Automotive Industry's expectations of static Weatherseal System performance and aesthetics.

## FORTREX® DENSE IN STATIC SEALING SYSTEMS

### FEATURES

- 30%+ Mass Reduction Versus Dense EPDM
- 10%+ Mass Reduction Versus Dense TPV
- Improved NVH Performance Over Time
- UV Stable, Custom Color Black
- Superior Compression Set Characteristics
- High Elasticity Performance
- Non-Conductive, Non-Blooming, Non-Fogging
- Exceptional Weathering Performance
- Improved Scratch Performance
- No VOC's (Volatile Organic Compound), No Nitrosamine

### TARGET APPLICATIONS

- Frame Under Glass - Glass Run Systems
- Channel Mounted - Glass Run Systems
- Inner Waist Belt
- Outer Waist Belt
- Below Belt Extrusions

# The Technology

## HARNESSING MATERIAL INNOVATION

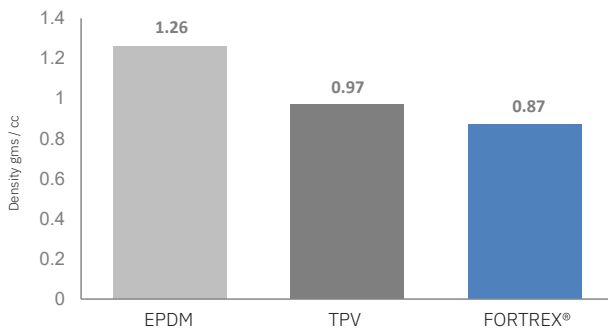


- Market-leading Weight Reduction to Existing Materials
- Superior Compression Set Performance
- Excellent Long-Term Weathering Performance
- Consistent NVH Performance Over Time and Exposure

### SUPERIOR PERFORMANCE

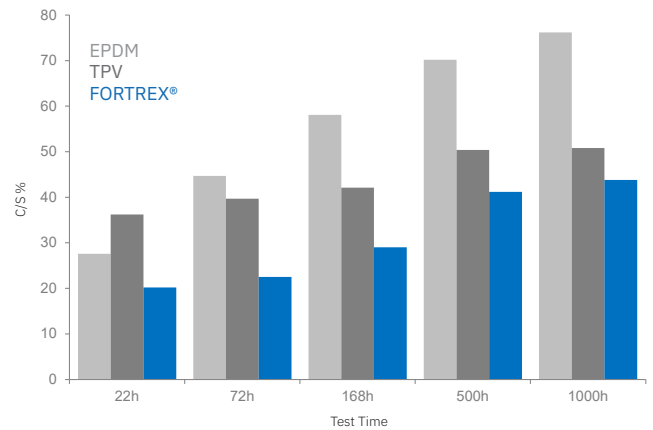
#### MATERIAL DENSITY

Weight Savings of nearly 2.7 kg for an average SUV vs EPDM



#### COMPRESSION SET

80C Plied C/S Per ASTM D D395, Method B



#### WEATHEROMETER TESTING

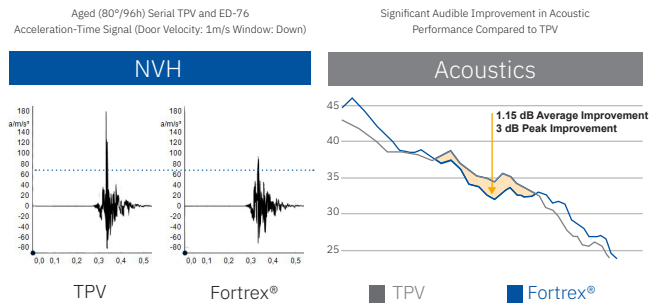
Exceptional weathering performance

SAE J1976, 5 deg. south, direct weathering inland

Duration	Specification	Arizona	Florida
		Fortrex®	
12 mo.	A AATCC Rating ≥ 4,	4-5	5
	B No cracking, crazing, or other	pass	pass
	C Deterioration ΔE ≤ 3.0	ΔE Average = 0.08	ΔE Average = 1.51
24 mo.	A AATCC Rating ≥ 4,	4-5	5
	B No cracking, crazing, or other	pass	pass
	C Deterioration ΔE ≤ 3.0	ΔE Average = 1.8	ΔE Average = 1.6

#### ACOUSTICS AND NVH TESTING

Holds its shape better than TPV leading to improved Acoustics and NVH performance.



World Headquarters: Novi, Michigan  
+1 (248)-596-9500

Asia Pacific Headquarters: Shanghai, China  
+86 021-8012-0012

European Headquarters: Mannheim, Germany  
+49 (0) 621-4702-514

Japan Headquarters: Yokohama, Japan  
+81 (0)45-227-5700

